



**Facility Technical Specifications**  
**as of March 2022**



19 Clinton Ave  
Albany, NY 12207  
Phone: 518-465-3335  
Fax: 518-427-0151  
[www.palacealbany.org](http://www.palacealbany.org)



19 Clinton Avenue Albany, NY 12207  
Phone: 518-465-3335 / Fax: 518-427-0151  
[www.palacealbany.org](http://www.palacealbany.org)

To all artists, presenters, and technical representatives,

This document specifies the technical information required in preparation for an event at the Palace Performing Arts Center. This document does not reflect a full understanding of engagement between the Palace Performing Arts Center (PPAC) and the Company. The package merely serves as a guide to the facility and does not supersede the contract document.

## Table of Contents

---

### Introduction

### Contacts

### Support Spaces

### Main Theatre

### Electrics, Sound & Video

### Lobby

### What's Around

### Directions

### Parking







19 Clinton Avenue Albany, NY 12207  
Phone: 518-465-3335 / Fax: 518-427-0151  
[www.palacealbany.org](http://www.palacealbany.org)

## Introduction to the Palace Theatre

The Palace Theatre, a grand cultural and entertainment facility in the heart of Albany, New York, first opened its doors in October 1931. Built during the Depression, the Palace was the largest theatre in a city already noted for a number of other opulent movie houses. Today, the Palace Theatre remains the sole survivor of this period of entertainment and continues to make history with a widely diverse offering of popular acts and cultural events.



Originally an RKO movie house presenting vaudeville acts between feature films, the Palace Theatre boasts an ornate Austrian Baroque design with "atmospheric" elements in the auditorium. The Palace Theatre's 2,708 seats are an ideal size for popular acts, such as Melissa Etheridge, Jerry Seinfeld, M.O.E, Bruce Springsteen, Bob Dylan, Roy Orbison, and Aretha Franklin, theatrical events Stomp, Chicago, Tap Dogs, Grease, and A Christmas Carol, gospel shows, community events, like Albany's First Night Concerts, Mayoral Inauguration's, Graduations, Armed Forces Bands; local dance studio recitals, daytime children's presentations, and even boxing. Arguably the most notable concert event took place at the Palace Theatre in April of 1965 when the now legendary Rolling Stones appeared here on their very first tour of the United States. Ticket prices were \$2 each.



The revitalization of the Palace Theatre has been a major priority of the City of Albany to help create a new energy for the downtown arts and entertainment district. Beginning in 2002, interior renovations completed in the first phase included all new carpeting, a stage curtain, fabric wall treatments, fresh paint on the ceiling and throughout the theatre, general public improvements and the refurbishment of over 2,800 seats. Phase Two renovations called for a new electrical system to power the stage. And of course the most obvious of our renovations (also in Phase Two) is our new marquee! It is a state-of-the-art full color replica of the original marquee designed in

1931. The new marquee fabrication and installation was made possible by a grant from Housing and Urban Development (sourced through the office of the Mayor) and a grant provided through the Downtown Business Improvement District.



19 Clinton Avenue Albany, NY 12207  
 Phone: 518-465-3335 / Fax: 518-427-0151  
[www.palacealbany.org](http://www.palacealbany.org)

## Contact Information

| Contact  | Office               | E-mail                      |
|--|----------------------|-----------------------------|
| Kevin Johnson<br><i>Executive Director</i>                     | 518-465-3335<br>x115 | kjohnson@palacealbany.org   |
| Danny Taylor<br><i>Managing Director</i>                       | 518-465-3335<br>x126 | dtaylor@palacealbany.org    |
| Hayes Fields III<br><i>Production Manager</i>                  | 518-465-3335<br>x112 | hfields@palacealbany.org    |
| Dylan Neary<br><i>Operations Manager / Merch Contact/CCO</i>   | 518-465-3335<br>x109 | dneary@palacealbany.org     |
| Ezra Graves<br><i>Facilities Coordinator</i>                   | 518-465-3335<br>x116 | egraves@palacealbany.org    |
| Bill O'Donnell<br><i>Front of House Manager</i>                | 518-465-3335<br>x101 | bodonnell@palacealbany.org  |
| Sean Allen<br><i>Marketing Director</i>                        | 518-465-3335<br>x111 | sallen@palacealbany.org     |
| Matt Consler<br><i>I.A.T.S.E. Local 14 Union</i>               | 518-898-6016         | iatselocal14ba@gmail.com    |
| John VanVorisi<br><i>A.F. of M Local Musicians Union</i>       |                      | johnvanvorisi@aol.com       |
| Derek Smith<br><i>Albany Symphony Orchestra</i>                | 518-465-4755         | dereks@albansymphony.com    |
| Eric Radden<br><i>Box Office Director</i>                      | 518-465-3335<br>X127 | eradden@palacealbany.org    |
| Corey Gilchrist<br><i>Operations Supervisor</i>                | 518-465-3335<br>X126 | cgilchrist@palacealbany.org |
| Sarah Meemken<br><i>Ticketing &amp; Promotions Coordinator</i> | 518-465-3335<br>X121 | smeemken@palacealbany.org   |



*Albany Symphony*



19 Clinton Avenue Albany, NY 12207  
Phone: 518-465-3335 / Fax: 518-427-0151  
[www.palacealbany.org](http://www.palacealbany.org)

*Palace Theatre Loading Dock*

**Storage:**

There is storage available in the basement (under the stage) accessible by orchestra lift and in rear alleyway.

**Ladders & Lift:**

PPAC has several ladders in house varying in size and (1) 30'-0" Genie lift.  
There are no elevators backstage in the building.  
A chain hoist is in place to move cases from stage level to each dressing room level.

**Production Office:**

A production office is located on level one, with 2 phone lines and high speed internet via Cat6 or Wi-Fi.

**Wardrobe:**

Washers & dryers are located on level 3.

**Dressing Rooms:**

There are 15 dressing rooms total all located stage left. All rooms are equipped with tables, chairs, mirrors, high speed Wi-Fi, phones and sinks. Showers are currently available on levels 1, 2, and the stage level.

- Level 1 (Red Floor) 80, 90, 90, 100, 144 sq ft
- Level 2 (Yellow Floor) 80, 90, 90, 100, 144 sq ft
- Level 3 (Silver Floor) 80, 90, 90, 100, 144 sq ft

Please note that the building is 80+ years old but all the restrooms and facilities are in proper working order.

**Catering:**

Two areas are available for catering needs (1 prep/serve & 1 for serve) located in our basement level. The main area can hold up to 80 people and the second can hold up to 22. Please contact Danny Taylor, if you require these areas or suggestions to utilize our excellent catering partners.



19 Clinton Avenue Albany, NY 12207  
Phone: 518-465-3335 / Fax: 518-427-0151  
[www.palacealbany.org](http://www.palacealbany.org)

## Support Spaces

## Support Spaces

---

### **General Description:**

Below is a brief description of the facilities at the Palace Performing Arts Center. If you require further information please contact our Director of Operations, Danny Taylor at [dtaylor@palacealbany.org](mailto:dtaylor@palacealbany.org). For technical questions please contact our Production Manager, Hayes M. Fields III at [hfields@palacealbany.org](mailto:hfields@palacealbany.org).

### **Loading Door:**

A single truck loading area is located on North Pearl Street, which is on the right side of the theatre doors and perpendicular to Clinton Avenue. All items can be moved in by a ramp from truck, ramp to stage or rolled through the door. Door dimensions are 7' 9" x 6' 10", the ramp is 17' long and 6' 9" wide with a 3' height change and the stage is 3' 5" below the sidewalk.







19 Clinton Avenue Albany, NY 12207  
Phone: 518-465-3335 / Fax: 518-427-0151  
[www.palacealbany.org](http://www.palacealbany.org)

*Palace Theatre Loading Dock*

**Storage:**

There is storage available in the basement (under the stage) accessible by orchestra lift and in rear alleyway.

**Ladders & Lift:**

PPAC has several ladders in house varying in size and (1) 30'-0" Genie lift.  
There are no elevators backstage in the building.  
A chain hoist is in place to move cases from stage level to each dressing room level.

**Production Office:**

A production office is located on level one, with 2 phone lines and high speed internet via Cat6 or Wi-Fi.

**Wardrobe:**

Washers & dryers are located on level 3.

**Dressing Rooms:**

There are 15 dressing rooms total all located stage left. All rooms are equipped with tables, chairs, mirrors, high speed Wi-Fi, phones and sinks. Showers are currently available on levels 1, 2, and the stage level.

- Level 1 (Red Floor) 80, 90, 90, 100, 144 sq ft
- Level 2 (Yellow Floor) 80, 90, 90, 100, 144 sq ft
- Level 3 (Silver Floor) 80, 90, 90, 100, 144 sq ft

Please note that the building is 80+ years old but all the restrooms and facilities are in proper working order.

**Catering:**

Two areas are available for catering needs (1 prep/serve & 1 for serve) located in our basement level. The main area can hold up to 80 people and the second can hold up to 22. Please contact Danny Taylor, if you require these areas or suggestions to utilize our excellent catering partners.



19 Clinton Avenue Albany, NY 12207  
Phone: 518-465-3335 / Fax: 518-427-0151  
[www.palacealbany.org](http://www.palacealbany.org)



*Park Playhouse's Production of Pinkalicious*



*Green Room Level 3*







19 Clinton Avenue Albany, NY 12207  
 Phone: 518-465-3335 / Fax: 518-427-0151  
[www.palacealbany.org](http://www.palacealbany.org)

Star Dressing Room Level 1

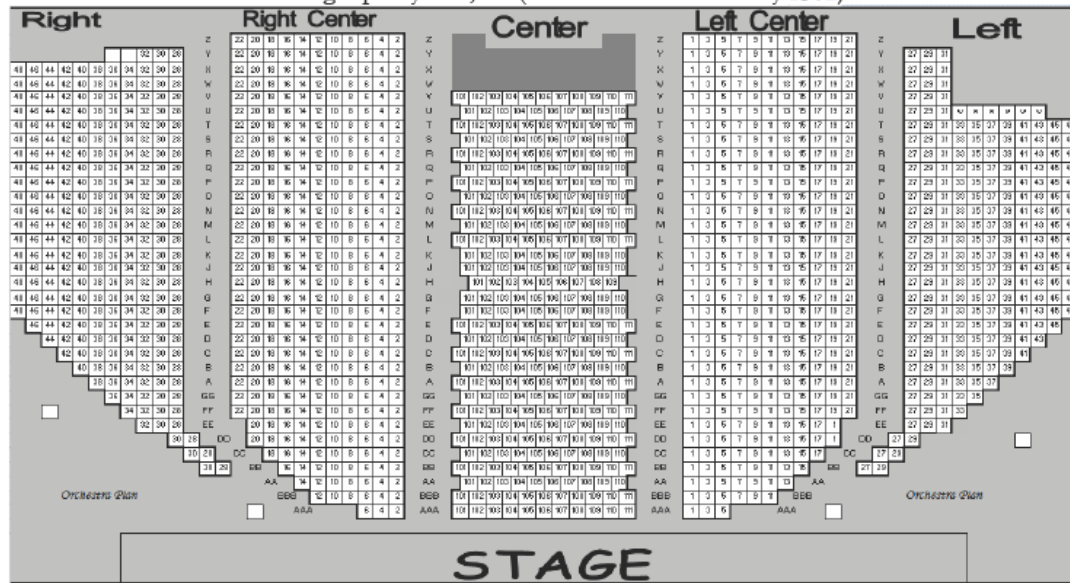


Dressing Room/ Office Level 1

## Main Theatre

### Seating Capacity:

The Palace Theatre has a seating capacity of 2,807 (Orchestra 1505 - Balcony 1302).



Orchestra Seat Map





19 Clinton Avenue Albany, NY 12207  
Phone: 518-465-3335 / Fax: 518-427-0151  
[www.palacealbany.org](http://www.palacealbany.org)

*Balcony Seat Map*

**Proscenium Opening:**

**Proscenium Opening:**

The proscenium opening is 64' wide and 43' high with a dead hung border that hangs down approximately 15" below the top of the arch.



19 Clinton Avenue Albany, NY 12207  
Phone: 518-465-3335 / Fax: 518-427-0151  
[www.palacealbany.org](http://www.palacealbany.org)

### **The Stage:**

The overall stage dimensions:

- 33' from edge of stage to back wall edge
- 31' from edge of stage to downstage edge of column
- Orchestra Pit: 49' 6" wide (rail to rail) // 11' wide at center line
- Stage to grid: 84' high
- Stage to pan: 78' high

Stage floor is tongue and groove oak. The surface is natural wood color with the exception of the pit surface, which is black in color.

No nails, stage screws or lags are allowed without prior consent of the Palace Theatre's Facilities Director and Operations Director.



*The main stage with rep Audio Stacks & Cluster with the Main Rag in*



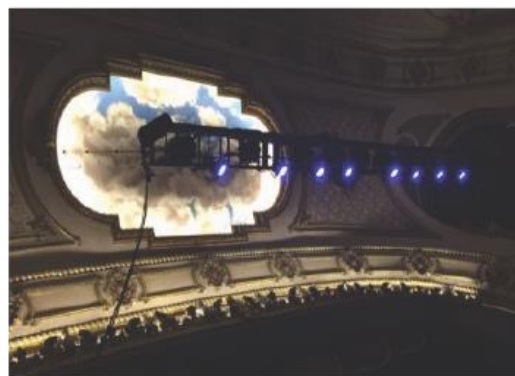
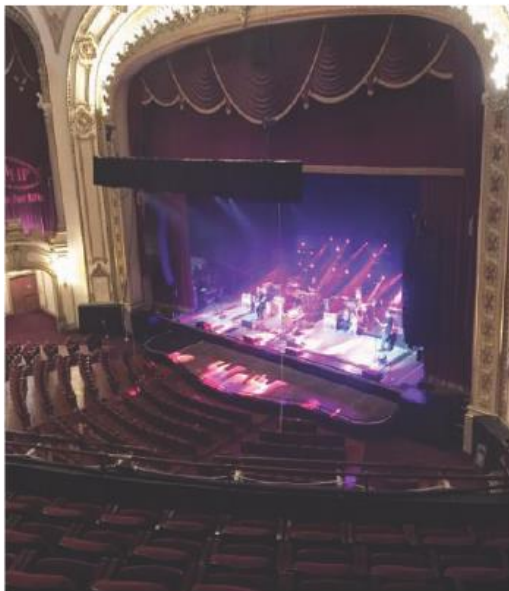
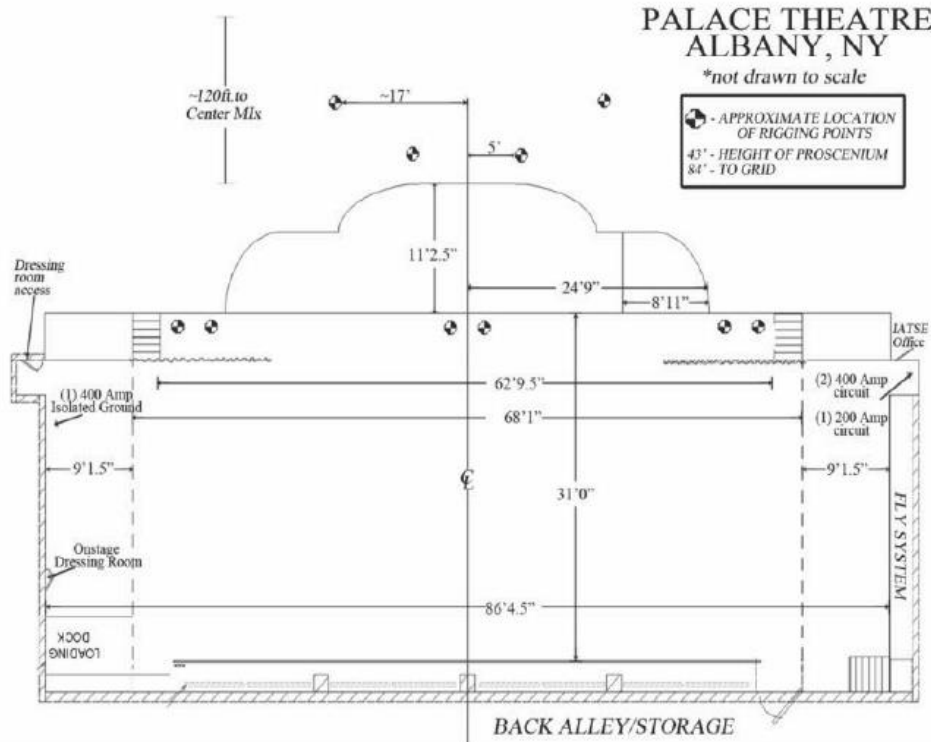


19 Clinton Avenue Albany, NY 12207  
 Phone: 518-465-3335 / Fax: 518-427-0151  
[www.palacealbany.org](http://www.palacealbany.org)

**F.O.H Rigging Points:**

**F.O.H Rigging Points:**

There are 4 points located downstage of pit located within cloud gunnel and 6 points in proscenium arch near at Center line, SL & SR rated at 2000 lbs each.



*Palace Theatre FOH rigging positions shown with box truss and PA from the 2015 Grace Potter tour.*



### **The Grid:**

The grid has a height of 84' deck to walking surface of grid. It is accessed via interior ladder system or exterior fire escape stairs.

The grid has a height of 84' deck to walking surface of grid. It is accessed via interior ladder system or exterior fire escape stairs.

The steel grid over the stage supports the theatrical rigging and provides a work platform. The downstage edge of the grid ends 2'-9" from the proscenium wall to allow an opening for the fire curtain and house curtain. The grid also ends 1'-10 1/2" from the rear wall of the stage.

The grid has five loft wells that are intended to support the loft blocks for the theatrical rigging. One loft well is located at centerstage with the remaining loft wells are spaced 16'-0" apart. The channels forming the loft wells do extend into the wall to brace the grid.

The loft wells are formed by two channels C12x20.7 spaced 10 inches apart. The channels span in the up-down stage direction with each pair of channels supported by two steel hangers from the roof beams. One hanger is located at the downstage end of the grid, 2'-9" from the proscenium wall and the other hanger is 8'-6" from the rear wall. The maximum span between the hangers is 19'-2". Beams span between the loft wells at spacing varying from 6'-4" to 6'-9". These beams are 8-inch channels (C8x11.5). These beams support 3-inch channels that are laid flat and spaced 5 inches apart to form the grid floor. Visual observation showed the grid framing to be in good condition. No signs of damage or deterioration were noticed.

The grid hangers are C10x15.3 channels that are supported from the roof. The hangers are connected to the roof and grid with a minimum of six 3/4-inch rivets at each connection.

The roof has steel girders that span in the up-down stage direction and are spaced 15'-8" apart. Cross stage beams running between the main roof girders are spaced 7'-0" apart. The girders and beams are steel beams encased in concrete fire proofing.

The roof is a reinforced concrete slab. Based on the span and construction details, the slab appears to be about six inches thick. The original built up roofing has been replaced with an adhered membrane.

The concrete slabs and beam encasement were in good condition. There were no cracks or other signs of structural distress visible. The spacing of the grid hangers means the grid adds relatively little stress to the roof beams. Combined with the weight reduction from replacing the original built-up roof with a membrane, the roof appears adequate for the maximum grid loads.

The weight or dead load of the grid is 17 PSF. This weight includes the channels, beams, sprinklers, and electrical conduit. In addition to its own weight and the loads from the counterweight rigging, the grid floor can support a maximum uniformly distributed live load of 55 PSF. This value is limited by the 8-inch channel beams spanning between the loft wells.

The 55 PSF live load is slightly less than the 60 PSF live load recommended for theatre grids in ASCE 7-16 Minimum Design Loads and Associated Criteria for Buildings and Other Structures. This standard also recommends an additional load of 250 pounds per foot at the loft wells. Based on the 1000-pound arbor capacity, the maximum loft block load is 300 pounds per foot and this higher load was used to determine the allowable grid loads.



19 Clinton Avenue Albany, NY 12207  
Phone: 518-465-3335 / Fax: 518-427-0151  
[www.palacealbany.org](http://www.palacealbany.org)

After accounting for the dead loads, the loads from the counterweight rigging, and an allowance for personnel working on the grid; the grid has additional capacity that may be used to support chain hoists and other items that may be dead hung from the grid. The total allowable load for this other rigging is 20,000 pounds.

The loads noted in this report correspond to a static load. Chain hoists impose a dynamic or shock load when they start and stop. For analysis, the static loads were increased by 15 per cent to account for these dynamic loads.

At the loft wells, a total of 2500 pounds may be applied to the channel on either side of the loft well in each span, i.e., one load in the 19'-7" span between the grid hangers and one load in the 8'-7" span upstage. If the load is evenly distributed to both channels with a short pipe or similar beam, the loads may be 5000 pounds per point. Multiple smaller loads may be applied to the loft wells provided the total of the loads does not exceed these limits.

Between the loft wells, one 2000-pound load may be applied to any of the 8- inch channels spanning between the loft blocks. These loads can be attached by slings around the channels or with pipes or hoist stands above the grid.

Between the 8-inch channels, a 1500-pound load can be supported on the 3- inch grid channels provided the load is distributed over a four-foot width of channels. This load distribution may be accomplished by a hoist stand or a 2 Loft Well and Grid Hanger Palace Theatre - 5 - pipe or spreader beam placed on the grid. If a pipe beam is used, the pipe should be at least a 3-inch schedule 40 steel pipe.

### **Fly System & Lineset Schedule:**

Counterweight system:  
Single Purchase

Length of pipes 70'0"

Pipe O.D 1 7/8" truss batten

Truss Batten is 500lbs total weight  
Leaving 500lbs loading capacity and is  
operated from stage right

No extensions available

The fire curtain must be kept clear at all  
times.

The current PPAC lineset schedule:







19 Clinton Avenue Albany, NY 12207  
 Phone: 518-465-3335 / Fax: 518-427-0151  
[www.palacealbany.org](http://www.palacealbany.org)

| Lineset | Distance to Plaster FT-IN | IN TRIM | OUT TRIM | House Hang        | Show Hang     | NOTES           |
|---------|---------------------------|---------|----------|-------------------|---------------|-----------------|
| -       | 0'-6"                     |         |          | Fire Pocket       |               |                 |
| 0       |                           |         |          | House Curtain     | NOT AVAILABLE |                 |
| A       |                           |         |          | Teaser            |               |                 |
| 1       | 2-2                       |         | 84'0"    | ASO Electric      |               |                 |
| 2       | 2-8                       | 3'-0"   | 84'0"    |                   |               |                 |
| 3       | 3-4                       | 3'-0"   | 84'0"    | Projector Screen  | NOT AVAILABLE |                 |
| 4       | 4-0                       | 3'-0"   | 84'0"    |                   |               |                 |
| 5       | 4-6                       |         | 84'0"    | ASO Ceiling Front |               | Stored Verticle |
| 6       | 5-2                       |         | 84'0"    | 1st Electric      |               |                 |
| 7       | 5-8                       | 3'-0"   | 84'0"    |                   |               |                 |
| 8       | 6-4                       |         | 84'0"    |                   |               |                 |
| 9       | 7-0                       |         | 84'0"    |                   |               |                 |
| 10      | 7-6                       | 3'-0"   | 84'0"    |                   |               |                 |
| 11      | 8-2                       |         | 84'0"    | Border            |               |                 |
| 12      | 8-8                       |         | 84'0"    | Leg (SL)          |               |                 |
| 13      | 9-4                       |         | 84'0"    | Leg (SR)          |               |                 |
| 14      | 10-0                      |         | 84'0"    | ASO Ceiling Back  |               |                 |
| 15      | 10-6                      |         | 84'0"    | #1 X-Ray          |               |                 |
| 16      | 11-2                      |         | 84'0"    | ASO Ceiling Front |               | Stored Verticle |
| 17      | 11-8                      |         | 84'0"    |                   |               |                 |
| 18      | 12-4                      | 3'-0"   | 84'0"    | 2nd Electric      |               |                 |
| 19      | 13-0                      |         | 84'0"    |                   |               |                 |
| 20      | 14-6                      |         | 84'0"    | Split Black       | Cannot Move   |                 |
| 21      | 15-2                      | 3'-0"   | 84'0"    | Movie Legs        |               |                 |
| 22      | 15-8                      |         | 84'0"    | Border            |               |                 |
| 23      | 16-4                      |         | 84'0"    |                   |               |                 |
| 24      | 17-0                      | 3'-0"   | 84'0"    |                   |               |                 |
| 25      | 17-6                      | 3'-0"   | 84'0"    | Border            |               |                 |
| 26      | 18-2                      |         | 84'0"    | ASO Ceiling Back  |               |                 |
| 27      | 18-8                      |         | 84'0"    | #2 X-Ray          |               |                 |
| 28      | 19-4                      |         | 84'0"    | ASO Ceiling Front |               | Stored Verticle |
| 29      | 20-0                      |         | 84'0"    | 3rd Electric      |               |                 |
| 30      | 20-6                      | 3'-0"   | 84'0"    |                   |               |                 |
| 31      | 21-2                      | 3'-0"   | 84'0"    |                   |               |                 |
| 32      | 21-8                      | 3'-0"   | 84'0"    | Border            |               |                 |
| 33      | 22-4                      | 3'-0"   | 84'0"    |                   |               |                 |
| 34      | 23-0                      | 3'-0"   | 84'0"    |                   |               |                 |
| 35      | 23-6                      |         | 84'0"    |                   |               |                 |
| 36      | 24-2                      |         | 84'0"    |                   |               |                 |
| 37      | 24-8                      |         | 84'0"    | #3 X-Ray          |               |                 |
| 38      | 25-4                      |         | 84'0"    | SR Leg            |               |                 |
| 39      | 26-0                      |         | 84'0"    | CYC Lights        |               |                 |
| 40      | 26-6                      |         | 84'0"    |                   |               |                 |
| 41      | 27-2                      | 3'-0"   | 84'0"    |                   |               |                 |
| 42      | 27-8                      | 3'-0"   | 84'0"    |                   |               |                 |
| 43      | 28-4                      |         | 84'0"    | Full Black        |               |                 |



19 Clinton Avenue Albany, NY 12207  
Phone: 518-465-3335 / Fax: 518-427-0151  
[www.palacealbany.org](http://www.palacealbany.org)

**Act Curtain:**

A burgundy colored main rag with a dead hung border above. (Traveler type operated from stage right).

**Orchestra Pit:**

The orchestra pit extends 11'-2 3/4" from the edge of the stage, drops to 14'-11 1/4" from stage level and is 4'-5" to the first seat. It is 49'-6 1/4" wide (including organ lift) and is fully adjustable by screwed lift. A removable 4' wide opening is available on stage left for access from floor into pit. The orchestra pit cannot be used for event seating.



*Palace Theatre's Backstage Ball.*





19 Clinton Avenue Albany, NY 12207  
Phone: 518-465-3335 / Fax: 518-427-0151  
[www.palacealbany.org](http://www.palacealbany.org)

*A company event function*

## **Electrics, Sound & Video**

---

### **Company Switches:**

PPAC has four 3 phase power tie ins on the main stage.  
Lighting has (2) 400 amp circuit located stage right while Audio has (1) 200 amp circuit located stage right and (1) 400 amp circuit isolated ground on located stage left.

### **Houselights and dimming:**

PPAC utilizes ETC Sensor 1 racks that control house and stage lights. There are ETC Unison Panels located around the venue and all units can be controlled from a lighting console. ETC Net2 Nodes are also located around the venue. PPAC dimmers are currently (3) 96x2.4k D20E for stage, & (1) 96x2.4k D20HR for houselights. All dimmers are at 120V power.

### **Lighting Rails:**

There are 2 lighting rails in front of the balcony capable of hanging 15 lights per side. It is approximately 75' from rail to proscenium at center line.

### **Clear Coms:**

There are 2 dry lines run to the spot booth. Please keep in mind the Palace Theatre has a **limited number of its own** headsets and power supplies







19 Clinton Avenue Albany, NY 12207  
 Phone: 518-465-3335 / Fax: 518-427-0151  
[www.palacealbany.org](http://www.palacealbany.org)

### Projector



PPAC owns (1) Christie CP2220 DLP Digital Cinema Projector with a 2.5/85.0-121.6mm 4K Zoom lens, a Doremi Dolby ShowVault, and a front projection screen with a display of 18'x40'.

Additionally, PPAC can accommodate HDMI, VGA, DVI, Apple Display, Blue-Ray, or DVD to be played in our system from backstage or FOH.

The Palace also houses one of the few operating 35mm film projectors in the Capital District. PPAC is an I.A.T.S.E Local 14 supported venue for projections.

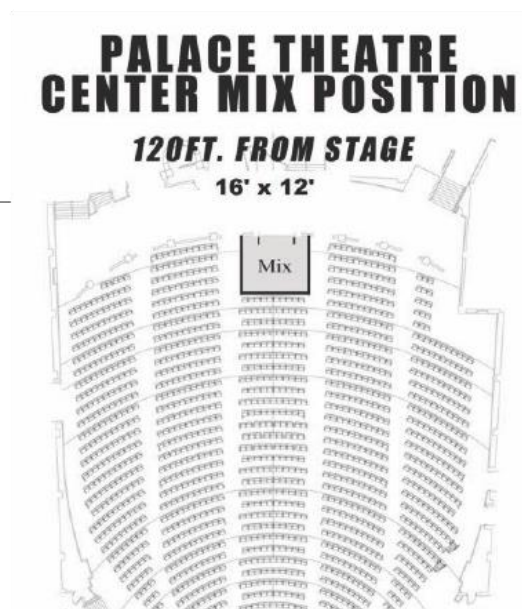
### Stage Lights:

The inventory of lights available is as follows:

| Unit                | Degree/Type    | Quantity |                        |
|---------------------|----------------|----------|------------------------|
| ETC Source Four     | 10             | 12       |                        |
| ETC Source Four     | 19             | 18       |                        |
| ETC Source Four     | 26             | 24       |                        |
| ETC Source Four     | 36             | 18       |                        |
| ETC Source Four     | 50             | 8        |                        |
| ETC Source Four     | PAR EA         | 14       | &13 hard-wired in Loge |
| Altman Borderlights | PAR 56-B       | 24       | 6 lamps each           |
| Altman Cyclights    | Broad Cyc      | 8        | (3 Cell)               |
| Altman Fresnel      | 6"             | 18       |                        |
| ETC Expression 3    | Lighting Board | 1        |                        |

### Mix Locations:

Located at center rear orchestra (12' wide area) with standing room approximately 120' ft FOH to stage.

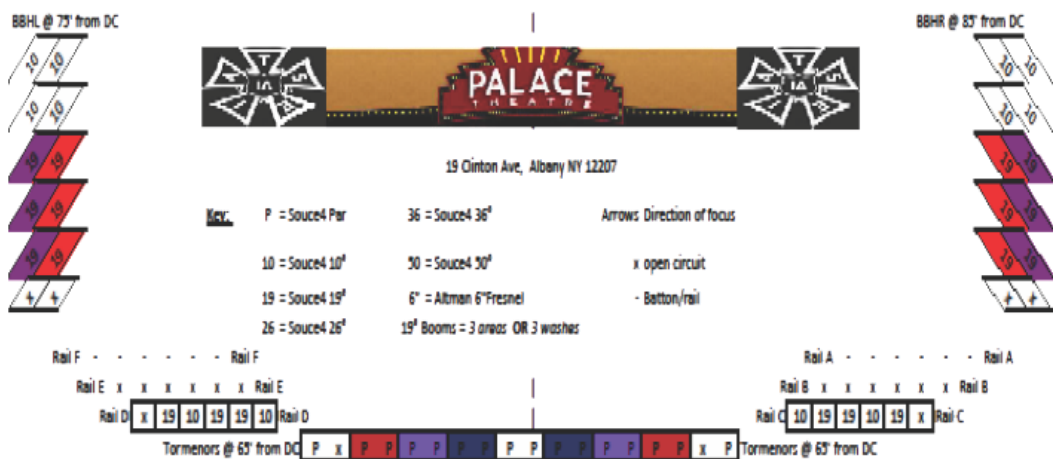
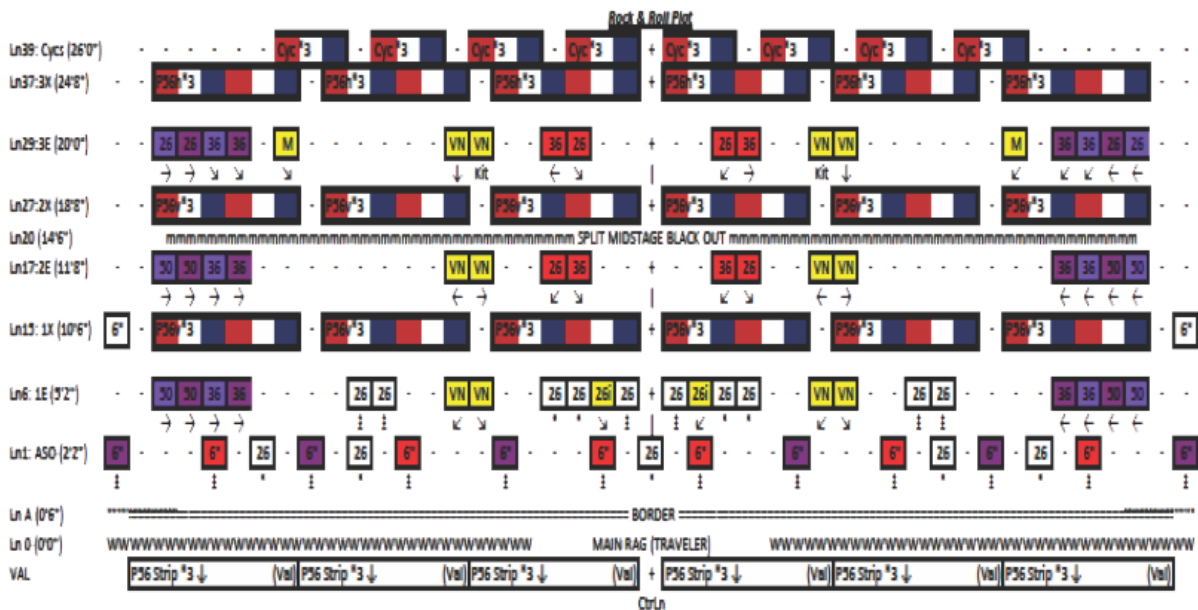




19 Clinton Avenue Albany, NY 12207  
 Phone: 518-465-3335 / Fax: 518-427-0151  
[www.palacealbany.org](http://www.palacealbany.org)

Palace Theater  
 19 Clinton Ave, Albany, NY 12207

Lighting Tech: D. Tarbassian, IATSE Local 14

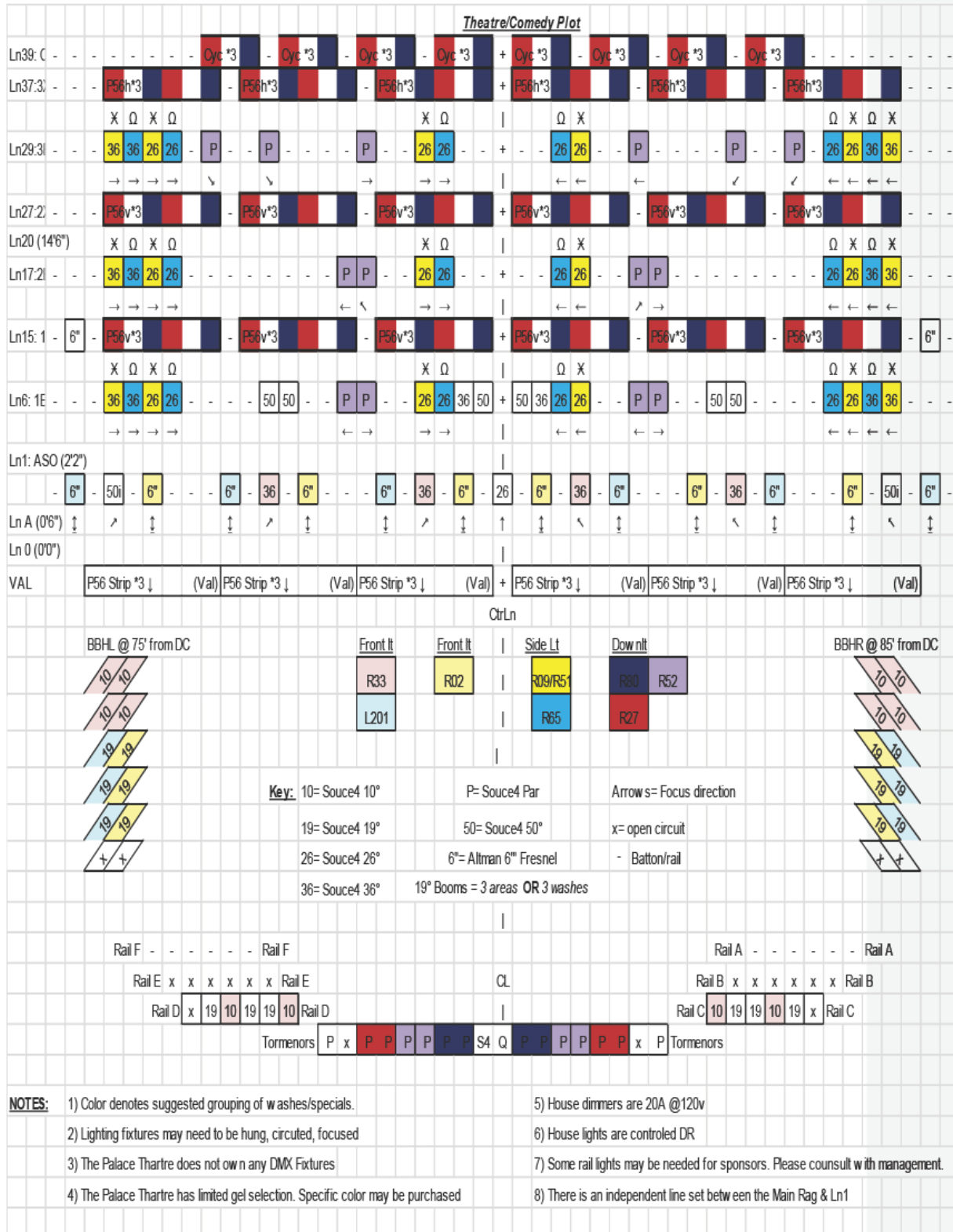


- NOTES:
- 1) Color denotes suggested grouping of washes/specials
  - 2) Lighting fixtures may need to be hung, circuited, focused
  - 3) The Palace Theatre does not own any DMX Fixtures
  - 4) The Palace Theatre has limited gel selection. Specific color may be purchased
  - 5) House dimmers are 20A @120v
  - 6) House lights are controlled DR
  - 7) Some rail lights may be needed for sponsors. Please consult with management.
  - 8) There is an independent line set between the Main Rag & Ln1

R&R Plot



19 Clinton Avenue Albany, NY 12207  
 Phone: 518-465-3335 / Fax: 518-427-0151  
[www.palacealbany.org](http://www.palacealbany.org)



**Theatre/Comedy Plot**



19 Clinton Avenue Albany, NY 12207  
 Phone: 518-465-3335 / Fax: 518-427-0151  
[www.palacealbany.org](http://www.palacealbany.org)

**Sound Information:**

| Quantity | Type               | Notes                                  |
|----------|--------------------|--|
| 4        | SM 58              |  |
| 4        | Wireless Hand Held |  |
| 8        | Wireless Body Mics |  |
| 10       | Wireless Receivers | (Not all wireless can be used at once) |
| 1        | Switch Senheizer   |  |
| 2        | DI's               |  |
| 2        | Monitor Wedges     |  |
| 2        | CD Players         |  |
| 2 CH     | 2CH Compression    |  |
| 2 CH     | 2 CH EQ            |  |
| 1        | Behringer X32      | Current v 1.12                         |
| 5        | Martin WT UB's     | Under balcony fill speakers            |

**Press Conferences:**

PPAC has (1) Eiki U4700 LED projector and a 9'x10' Fast fold Screen.

PPAC has (1) Yamaha EX312SE mixer and (2) Yamaha B12 Speakers for press conferences.



**Other Information:**

PPAC is ADA compliant with a Williams Sound wireless FM listening system with 6 personal receivers.

The Palace Theatre is an I.A.T.S.E 14 supported theatre. You may contact the business agent, Jimmy Anziano at 518-427-1580, to review any tech requirements you may have **PRIOR** to loading in.

A merchandise area is available in the main lobby of the theater. Please contact Dylan Neary, FOH Operations Manager for more information.



*Merchandise area*





19 Clinton Avenue Albany, NY 12207  
Phone: 518-465-3335 / Fax: 518-427-0151  
[www.palacealbany.org](http://www.palacealbany.org)

## What's Around

---

### **Hotels:**

#### **Hampton Inn & Suites**

518-432-7000  
25 Chapel St, Albany NY 12210  
0.1 mi. from PPAC

#### **Fairfield Inn & Suites**

518-434-7410  
74 State St, Albany NY 12207  
0.4 mi. from PPAC

#### **Marriott-Renaissance Albany Hotel**

518-396-8471  
144 State St, Albany NY 12207  
0.5 mi. from PPAC

#### **TownePlace Suites**

518-860-1500  
22 Holland Ave, Albany 12209  
1.7 mi. from PPAC

#### **Hilton**

518-462-6611  
40 Lodge St, Albany NY 12207  
0.3 mi. from PPAC

#### **Holiday Inn Express**

518-434-4111  
300 Broadway, Albany NY 12207  
0.7 mi. from PPAC

#### **Albany Morgan State House Inn**

518-427-6063  
393 State St, Albany NY 12210  
1.2 mi. from PPAC

#### **Hilton Garden Inn**

518-396-3500  
62 New Scotland Ave, Albany NY 12208  
2.2 mi. from PPAC

### **Restaurants:**

Albany Pump Station: 518-447-9000  
[www.evansale.com](http://www.evansale.com)

McGeary's Restaurant: 518-463-1455  
[www.mcgearyspub.com](http://www.mcgearyspub.com)

Angelo's 677 Prime: 518-427-7463  
[www.677prime.com](http://www.677prime.com)

Yono's Restaurant: 518-436-7747  
[www.yonos.com](http://www.yonos.com)

Ama Cocina: 518-776-4550  
[www.amacocina.com](http://www.amacocina.com)

The City Beer Hall 518-449-2337  
[www.thecitybeerhall.com/menu-food/](http://www.thecitybeerhall.com/menu-food/)

The Olde English Pub: 518-434-6533  
[www.theoldeenglish.com](http://www.theoldeenglish.com)

The City Beer Hall 518-449-2337  
[www.thecitybeerhall.com/menu-food/](http://www.thecitybeerhall.com/menu-food/)

DP American Brasserie: 518-436-3737  
[www.dpbrasserie.com](http://www.dpbrasserie.com)

Dawn's Victory Café: 518-463-9113  
[www.dawnsvictorysportscafe.com](http://www.dawnsvictorysportscafe.com)

The Hollow Bar & Kitchen: 518-426-8550  
[www.thehollowalbany.com](http://www.thehollowalbany.com)



19 Clinton Avenue Albany, NY 12207  
Phone: 518-465-3335 / Fax: 518-427-0151  
[www.palacealbany.org](http://www.palacealbany.org)

## Directions

---

### **From North:**

From the Northway (I-87), drive south to exit 1E onto I90 eastbound. About 5 miles to the 787 interchange. Follow signs for 787 South. Once on 787, drive one mile to the Clinton Avenue exit 4B. At the base of the ramp are traffic lights. You will be able to see the Palace Theatre ahead of you on the right, one short block up. **Trucks/Buses-** Make right onto Broadway, left onto Wilson St. then left onto North Pearl St.

### **From South:**

New York State Thruway (90) North to Exit 23. Go through toll. Follow signs for 787 North. Once on 787 North, take the exit marked as Rt. 9 North, Rt.20 west, Downtown Albany. This will place you on a road that parallels 787. Follow signs for Clinton Avenue and take that ramp. At the base of the ramp are traffic lights. You will be able to see the Palace Theatre ahead of you on the right, one short block up. **Trucks/Buses-** Make right onto Broadway, left onto Wilson St. then left onto North Pearl St.

### **From the East:**

Mass Turnpike West (90) to NY State Thruway (90) West. Drive on 90 to exit B1. Go through the toll and arrive on 90 East drive approximately 14 miles to 787 interchange. Take exit for 787 South. Once on 787, drive one mile to the Clinton Avenue exit 4B. At the base of the ramp are traffic lights. You will be able to see the Palace Theatre ahead of you on the right, one short block up. **Trucks/Buses-** Make right onto Broadway, left onto Wilson St. then left onto North Pearl St.

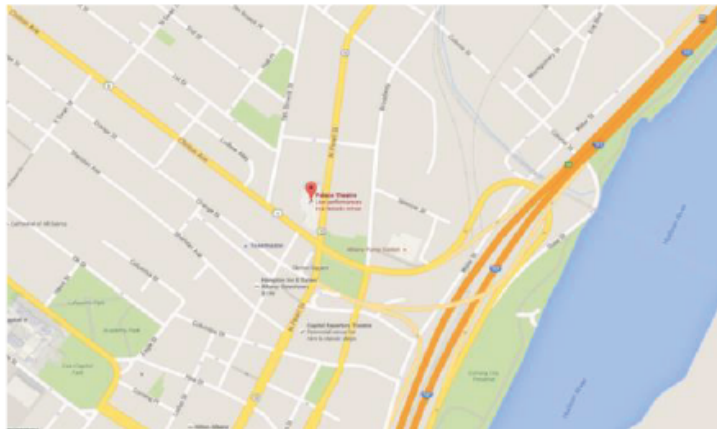
### **From the West:**

New York State Thruway, (90) to Exit 24. Go through the toll and follow signs for 90 East. About 5 miles to the 787 interchange. Follow signs for 787 South. Once on 787, drive one mile to the Clinton Avenue exit 4B. At the base of the ramp are traffic lights. You will be able to see the Palace Theatre ahead of you on the right, one short block up. **Trucks/Buses-** Make right onto Broadway, left onto Wilson St. then left onto North Pearl St.

### **From Vermont:**

Rt 9 West out of Bennington. This becomes Rt 7 in NY. Drive on Rt 7 through Troy, NY. Cross Hudson River on bridge and follow signs for 787 South. Follow 787 South past the I90 interchange. About a mile past the I90 interchange, you will see the Clinton Avenue exit. Take this exit. At the base of the ramp are traffic lights. You will be able to see the Palace Theatre ahead of you on the right, one short block up. **Trucks/Buses-** Make right onto Broadway, left onto Wilson St. then left onto North Pearl St.

[Google maps can be used to search for directions.](#)





19 Clinton Avenue Albany, NY 12207  
Phone: 518-465-3335 / Fax: 518-427-0151  
[www.palacealbany.org](http://www.palacealbany.org)

## **Parking:**

Requirements must be conveyed to the PPAC Staff at least **one week** prior to event to coordinate parking with the City of Albany. There is adequate curbside parking for at least *5 vehicles* (trucks and/or buses).



Above is a map of the parking available for any event.

Sections in yellow are no-parking zones for fire or safety services & disabled individuals.

Sections in blue are the loading dock zones

Additional zones may be requested if necessary.

Sections in red are zones available for parking through our Facilities and Operations Director's.






19 Clinton Avenue Albany, NY 12207  
Phone: 518-465-3335 / Fax: 518-427-0151  
[www.palacealbany.org](http://www.palacealbany.org)

**Tour Vehicle Parking Reference**



**Load-In Door & Ramp**  
**Shore Power**

**All vehicles must be parked facing the Clinton Ave side of the building, indicated by the arrow below.**  
  
**(The truck in the above image is facing the wrong direction)**